



PRODUCT: JK Drag Link

REV: B | 09-12-2017 | II-7069

READ INSTRUCTIONS IN FULL BEFORE INSTALLATION.
QUESTIONS? CALL 916-631-8071 M-F 7:00 AM – 5:00 PM PST

The MetalCloak experience includes the ease of installation of our products. We design for most contingencies, but installation may be different based on different Jeep condition, configuration and/or year.

We are continually trying to improve our products and instructions – please help us by providing feedback and pictures if you find any part of the instructions that do not match your particular Jeep or are not easily understandable.

If you have any difficulties at all, please give us a call. Thank you and enjoy your MetalCloak Products!

IMPORTANT NOTE: We use Stainless Steel Hardware where possible. Therefore, a tube of Silver Anti-seize is provided and should be used on all bolts—only a small amount is needed.

WARRANTY INFORMATION: This article is sold without warranty expressed or implied. No warranty or representation is made as to this products ability to protect the user from injury or death. The user assumes that risk. The effectiveness, warranty and longevity of this equipment are directly related to the manner in which it is INSTALLED, USED and/or MAINTAINED. THE USER ASSUMES ALL RISK. By purchasing this product and opening the packaging, purchasers expressly acknowledge, understand and agree that they take, select and purchase these MetalCloak products from Armored Works, LLC, its affiliates and distributors and agents as is and with all faults. The entire risk as to the quality and performance of these MetalCloak products is with the purchaser. Working on your vehicle can be a dangerous activity. If you are unsure of what you are doing, please leave mechanical or safety critical work to a skilled mechanic. We take no responsibility for the incorrect use and/or installation of MetalCloak products.

Section 1: Tools & Notes on Installation

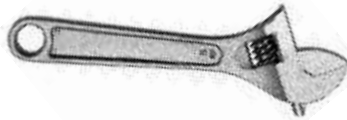


Tools Required: This list is the recommended tools for ease of installation. Other versions of the same tool can be used. For example, Allen Wrenches instead of Allen Drive Sockets.



1/2" Ratchet

21mm Socket
27mm Socket



Large Adjustable Wrench

HOW TO USE THIS GUIDE: The installation guide contains ALL steps for installation. Please read and follow the instructions in order of each page top to bottom, and left to right.

Jeep Model: Instructions may apply to multiple Jeep models, but are labeled separately where appropriate (i.e. TJ vs. LJ).

Options: Because of the number of component options we offer, these instructions may contain steps that will not match your particular configuration. You can skip these steps.

Images: Pictures are provided and parts are labeled throughout the instructions. Each text box contains guidance based on the pictures next to it. The text will refer to alphabetical labels (A, B, etc.) found in the images.

Installation Notes: Terms may be used in the body of the instructions that you may not be familiar with, if you have any questions feel free to contact us at the number below, or email techhelp@metalcloak.com

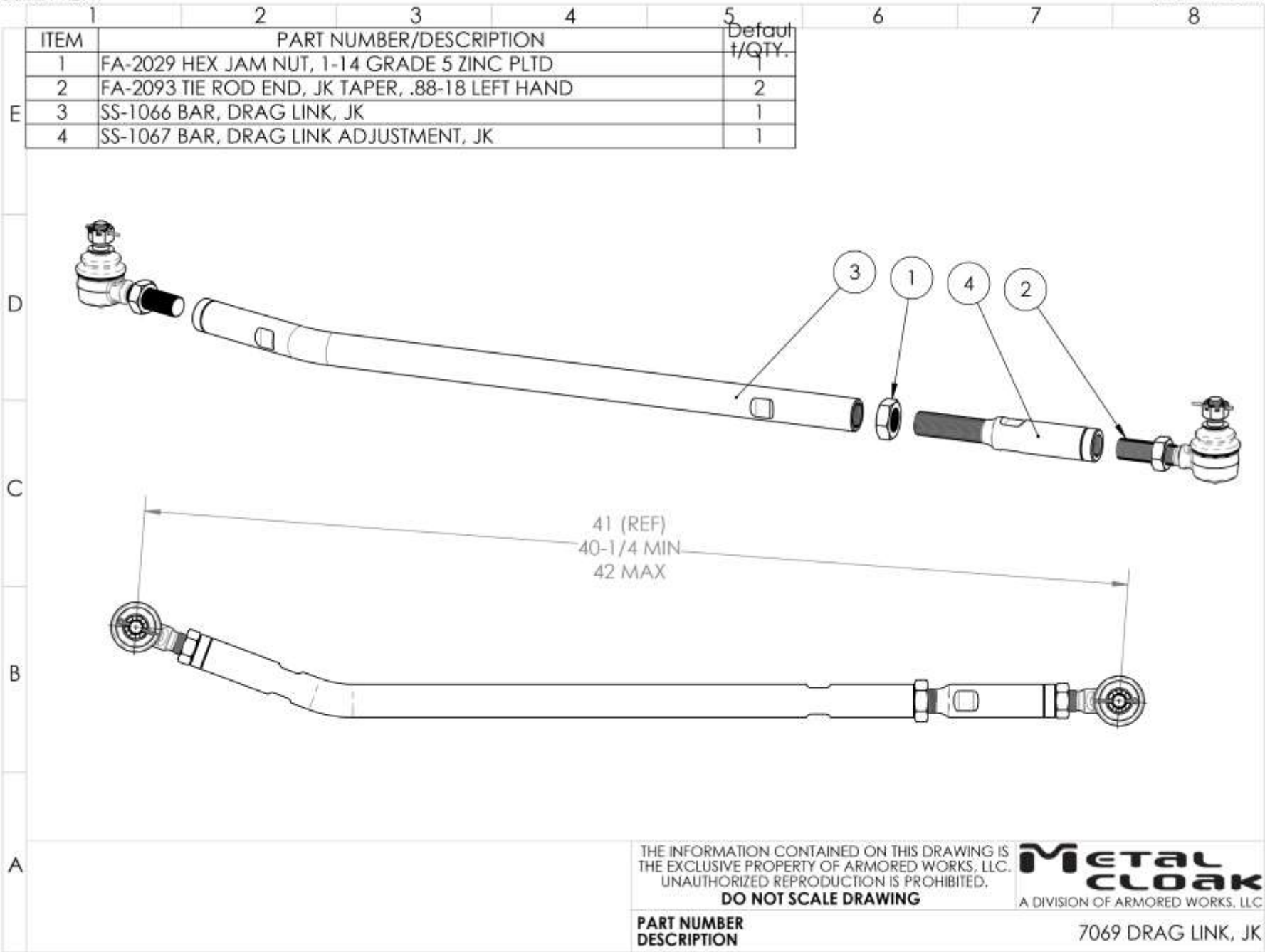
QUESTIONS: Any questions or comments about the instructions? Call us at 916-631-8071 M-F 7:00 AM – 5:00 PM PST.

Section 2: Product Components



DC-0001 REV A

SHEET 1 OF 1



Section 3: Installation Instructions



Step 5: Install Drag Link

- A. Remove stock drag link using a 21mm socket.
- B. Install the MetalCloak JK Drag Link, preferably the passenger side first. The side of the drag link to be installed in the passenger side will have the bend in it. An extra pair of hands will be useful in holding the other side of the drag link. Use the provided castle nut and only snug the castle nut for now (you will fully tighten everything at the end).
- C. Install the other side of the MetalCloak JK Drag Link. You may need to turn the tires in order to install the drag link. Use the provided castle nut and only snug the castle nut for now.



Important Note: The joint is assembled with grease but is recommended to have additional grease inserted before use.



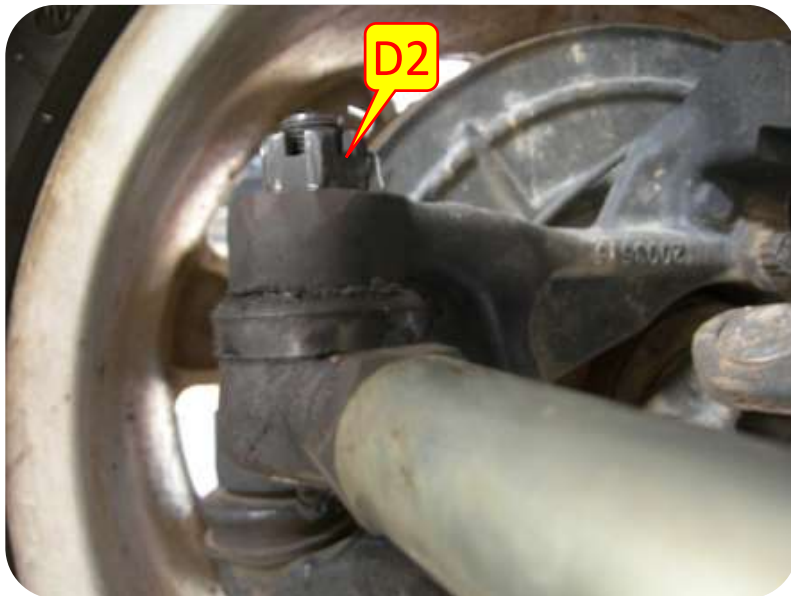
Section 3: Installation Instructions

Step 5: Install Drag Link

- D. Fully tighten and align the castle nuts on both ends of the Drag Link with a 1/2" ratchet and a 27mm socket. Insert and bend the cotter pin to secure the castle nut from loosening.

Note: Before Continuing on to the next step make sure wheels are straight.

- E. Turn the Drag Link Adjuster, either using your hand or an adjustable wrench, whichever is easier, until the steering wheel is level.



Section 3: Installation Instructions



Step 5: Install Drag Link

- F. Tighten both Jam Nuts.
- G. MetalCloak **STRONGLY RECOMMENDS** having your alignment checked by a professional after changing any suspension components.

