



Installation Instructions (Page 1)

Jeep JK 2.5 inch Front 07+

714-530-8701 info@kingshocks.com www.kingshocks.com

1. With the vehicle on level ground, set the emergency brake and block the rear tires. Using a floor jack, raise the front end and support the frame rails with jack stands for safety. Then remove the front tires.

NOTE: never work under an unsupported vehicle.



Remove the factory shock absorber by loosening the nuts on the top and bottom shock mounts. Install your King shocks by removing the upper bushing, retaining plate and nut from the upper pin mount. Insert the threaded pin mount into the top shock mount with the reservoir facing out. Place the rubber bushing, retaining plate and nut but don't tighten it completely. Put the rod end into the lower shock mount, insert the bolt and nut then tighten it down. Tighten the upper bolt until the rubber bushings start to bulge making sure that the reservoir and the hose fitting have enough clearance from the shock mount and coil spring as shown.



IMPORTANT: Read all instructions thoroughly from start to finish before beginning the install. Check parts list and make sure all parts are included in the kit. If the instructions are not properly followed severe frame, driveline and or suspension damage may result. Check for frame and suspension damage prior to installation. This kit does not require welding. Do not weld on any component. Welding may void the warranty and product to fail. If any parts are missing, or for tech assistance; Contact King Off Road Racing Shocks. 714-530-8701 Most important after the install, Feel the difference and have fun.



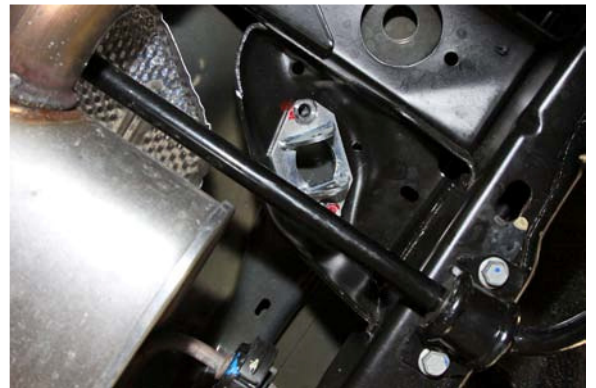
Installation Instructions (Page 1)

Jeep JK 2.5 inch Rear 07+

714-530-8701 info@kingshocks.com www.kingshocks.com

1. With the vehicle on level ground, block the front tires. Using a floor jack, raise the rear end and support the frame rails with jack stands for safety. **NOTE: never work under an unsupported vehicle.**
2. Take off the factory shocks on each side by removing the bolts on the top frame mounts and the through bolt and nut on the lower axle mount.
3. Before Installing your King shocks check for the label that designates which side of the vehicle it fits on. The clearance is very tight on the rear shocks. If any part of the shocks is making contact with the frame, swaybar or anything else call King Shocks at 714-530-8701 for technical assistance. The mounting bracket is longer on one side than the other. When installed properly the longer side goes towards the swaybar as shown.

**** Shown for reference only, do not remove bracket from shock assembly.**



4. To make installation easier, remove the nut from the top mount as shown. You can slide the bolt over to gain access to the bracket mount bolt above it. Insert the shock assembly into the frame pockets, Install the mounting bolts and tighten. After the mounting bolts are tightened, slide the bolt back and install the nut and washer to the through bolt and tighten.



5. Put the rod end into the lower shock mount, insert the bolt and nut with the nut towards the tire then tighten it down. Do the same to the other side.

IMPORTANT: Read all instructions thoroughly from start to finish before beginning the install. Check parts list and make sure all parts are included in the kit. If the instructions are not properly followed severe frame, driveline and or suspension damage may result. Check for frame and suspension damage prior to installation

This kit does not require welding. Do not weld on any component. Welding may void the warranty and product to fail. If any parts are missing, or for tech assistance; Contact King Off Road Racing Shocks. 714-530-8701 Most important after the install, Feel the difference and have fun.



Installation Instructions (Page 2)

Jeep JK 2.5 inch Rear 07+

714-530-8701 info@kingshocks.com www.kingshocks.com



Driver side



Passenger side

6. While the Jeep is on the jack stands, let the axle droop down all the way and check to make sure the shocks have proper clearance. Then jack the rear end up to check clearance with the shocks compressed. If any part of the shocks is making contact with the frame, swaybar or anything else call King Shocks at 714-530-8701 for technical assistance.

The completed installation should look like this.



IMPORTANT: Read all instructions thoroughly from start to finish before beginning the install. Check parts list and make sure all parts are included in the kit. If the instructions are not properly followed severe frame, driveline and or suspension damage may result. Check for frame and suspension damage prior to installation

This kit does not require welding. Do not weld on any component. Welding may void the warranty and product to fail. If any parts are missing, or for tech assistance; Contact King Off Road Racing Shocks. 714-530-8701 Most important after the install, Feel the difference and have fun.